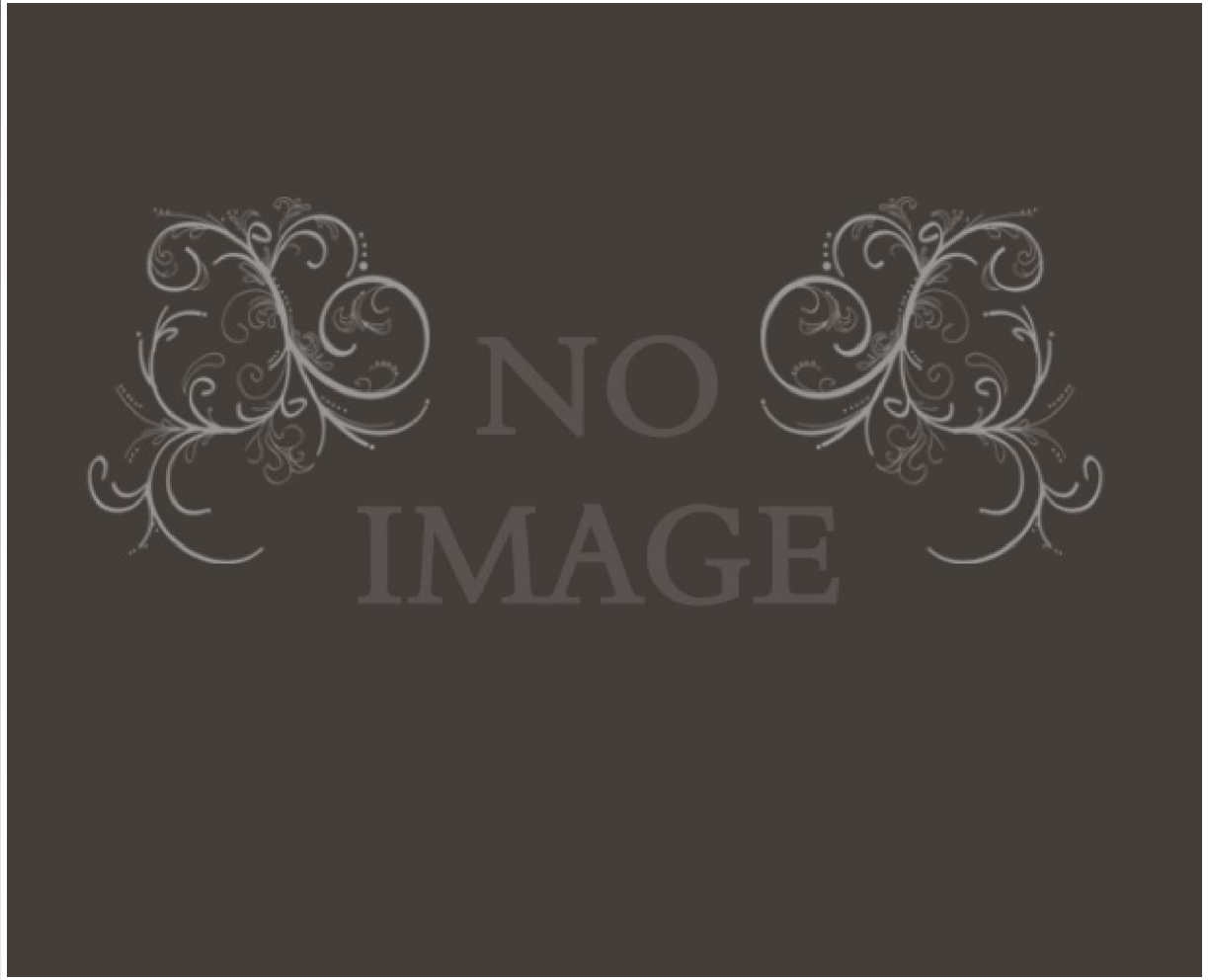


# Applications

## AUTOMOTIVE APPL CAT ON CHOCOLATE MANUFACTURE



Two different colours of chocolate are injected into the mold as shown in the figure. If these two products have the same static charges, they push each other and if they have the opposite static charges, It causes form changing of the chocolate. In addition to these problems, they attracts dust so it isn't an acceptable condition. It may cause electrical shocks and because of the carrying problems, the speed of the system decreases.

H&O static bars positioned as shown will neutralise static charges on the moulds and layers of chocolate.